



VALLABH PRITI SEVA SAMAJ OF HOUSTON, INC.

A 501 (C) (3) Not-for-Profit Religious Organization
11531 Bellfort Village Drive, Houston, Texas 77031

Contact: Suresh S. Patel, Trustee (832-603-1850) / ssp1940@gmail.com

Dear Worshiper of Shree Nathjee:

You will certainly agree with me that Lord Shri Nathjee has blessed most of us and gave us lot more than many of us would have dreamt of at the beginning of our careers. Now is the time to show our gratitude.

VPSS has successfully negotiated and finalized a contract to acquire a 7.15+ acres size tract of adjoining land parcel at \$2.00 / SF. This has caused the Board of Trustees to raise \$650,000 in less than a month.

We come to you with great expectation that you will generously answer our call for funds and supports us in one of the following manners:

1. Outright donation
2. Interest free loan, preferably in multiple of \$5,000
3. Loan with 4% fixed rate loan preferably in multiple of \$5,000

Please note that all the loans will be fully paid back in three years or less. However, should you need the funds sooner we will repay your loan with one day's notice. VPSS has done this for fifteen years and has never let anybody down. Also, the value of physical assets of VPSS has risen to over ten million dollars and has very little debt.

We have no immediate use of the land. However, this will double the size of land and someday when our community recognizes the need for a world-class retirement facility, a first-rate wedding facility with ample parking and landscaping or a full-fledged Vidya Mandir, this land will come in handy. Besides, such opportunities and special circumstances do not come your way but rarely. And the Board in its wisdom dared to move ahead with foresight and confidence.

We have attached the most relevant information about the land. Should you have any questions or wish to learn more, please do not hesitate to contact the undersigned or any of our Trustee who may approach you. We will try to earn your trust and confidence.

Jay Shree Krishna.

Suresh S. Patel
Trustee / Ex-Chairman

Niranjana S. Patel
Chairman

Rasesh Dalal
Comptroller

Dr. Pankaj Shah
Vice- Chairman

Shweta C. Parikh
Secretary

Sarla J. Patel
President

FACTS IN A NUTSHELL

Please see Attachment 01

The yellow boundary line indicates the land owned by the seller. It includes the FRITO-LAY facility.

Please see Attachment 03

The yellow boundary line indicates the land we have contracted to buy from the seller at \$2 / SF

Total purchase price is \$625,000.

At a VPSS Board of Trustee meeting the resolution to acquire the land was unanimously approved by all 26 trustees present. Now it will be presented to eight remaining trustees for their vote.

Also, the trustees and invited guests pledged to contribute a total sum of \$250,000 in various forms.

By noon of April 30, 2019 we have raised \$400,000.

In next two weeks we need to raise additional \$250,000 minimum to close the acquisition transaction.

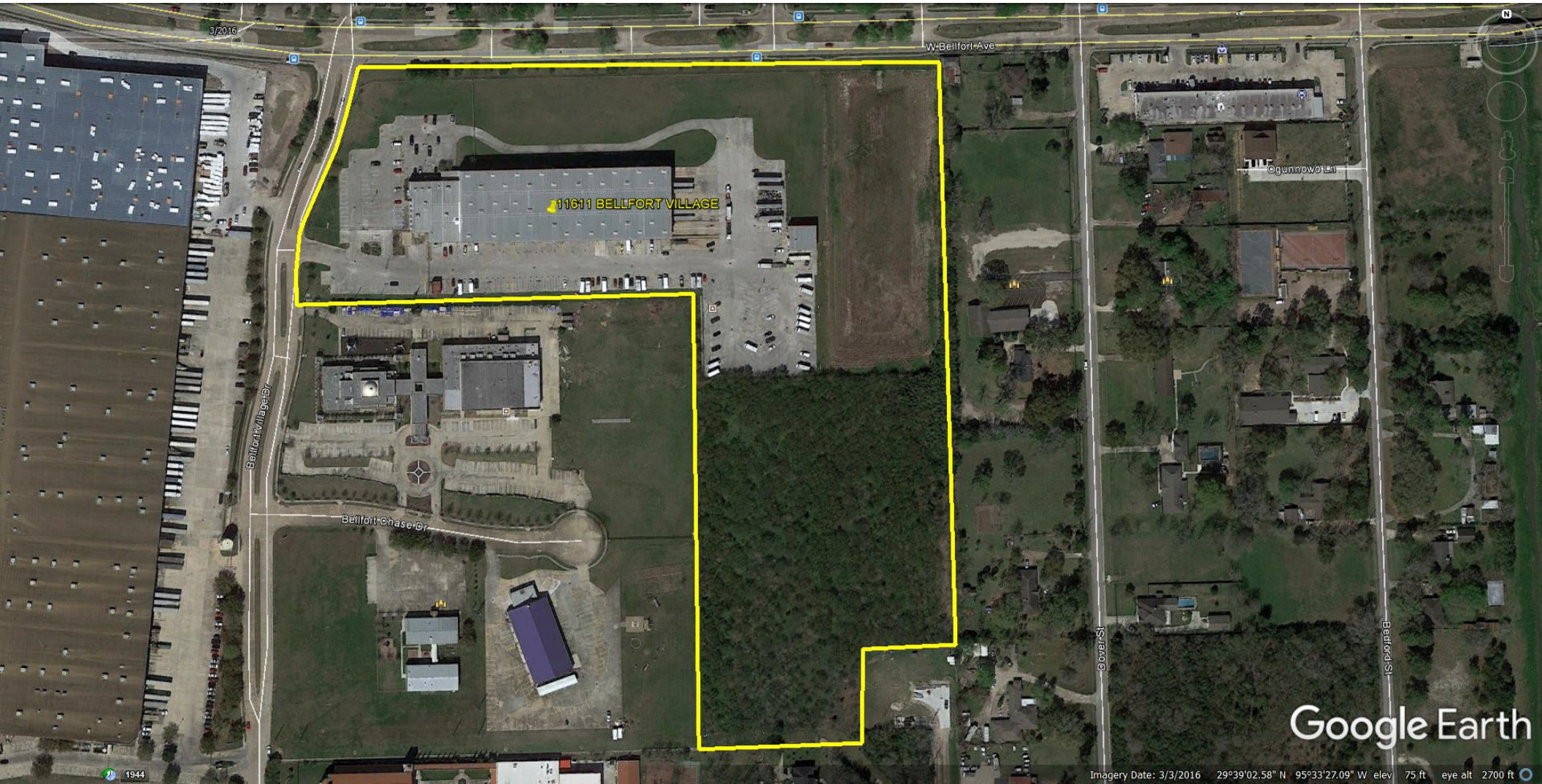
We urge you to contribute as much as you can in the manner that suits you.

Please contact us, if you have any questions.

Suresh Patel 832-603-1850

Niranjan Patel 281-630-3875

Sarla Patel 713-530-2900



11611 BELLFORT VILLAGE

3/2016

W Belfort Ave

Ogunnwole Ln

Belfort Village Dr

Belfort Chase Dr

Dover St

Bedford St

Google Earth

Imagery Date: 3/3/2016 29°39'02.58" N 95°33'27.09" W elev 75 ft eye alt 2700 ft

1944

EXHIBIT "A"
Write a description for your map.

Legend

